

The most common fossil found at Mineral Wells Fossil Park are the stalks of crinoids (sea lilies). While crinoids may look like weird plants, they are actually animals. There are likely dozens of species found here, each with their own design and ornamentation. Some even have spikes.

Click photos to zoom. Photography and diagrams by Lance Hall.



Unknown crinoid stalk



20 mm long

Unknown crinoid columnal



6.5 mm wide

Similar to "Cyclocion" an upper Mississippian crinoid

"Cyclocaudex" crinoid columnal



9 mm wide



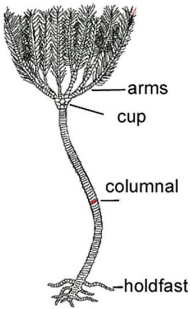
Crinoid Columnal

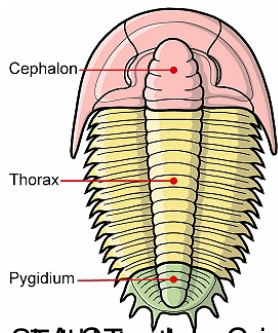


Crinoid Stalk

Crinoid Columnal

Cyclocaudex





St. Albans Crinoid Top Crinoid Diagram

Petalodus



"Floricyclus" crinoid columnals



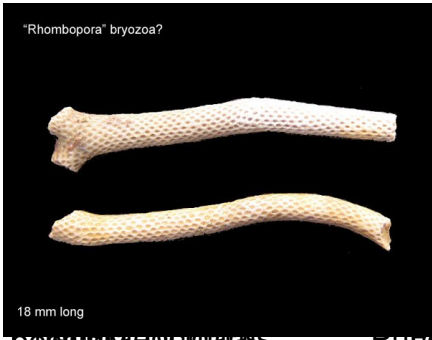
6-8 mm wide

"Punctospirifer" brachiopods



15-17 mm wide





Posidonia maritima

Pandora

Brachipods

unidentified

Rhombopora Bryozoa



"Cyclocaudex" crinoid columnal



10 mm wide

"Apographeocrinus" crinoid cup (calyx)



10 mm wide

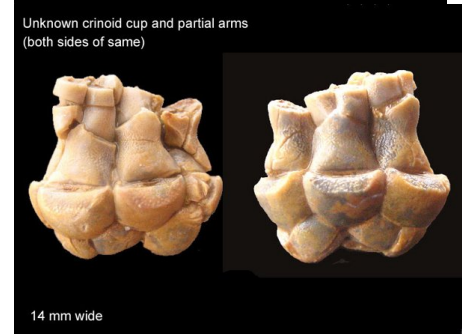
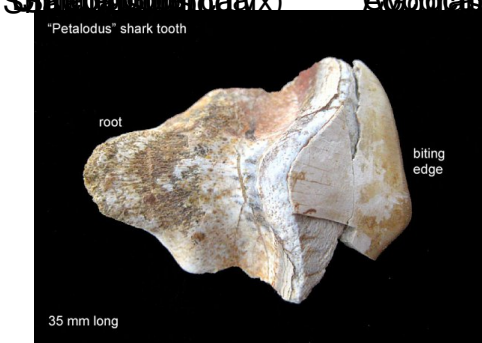
"Straparollus" gastropod



10 mm wide



Strophomena, Trepostrophia, Eoconularius





Shallow Crinoid Cup      Orthoconic Nautiloids      possibly a Cyclocrista